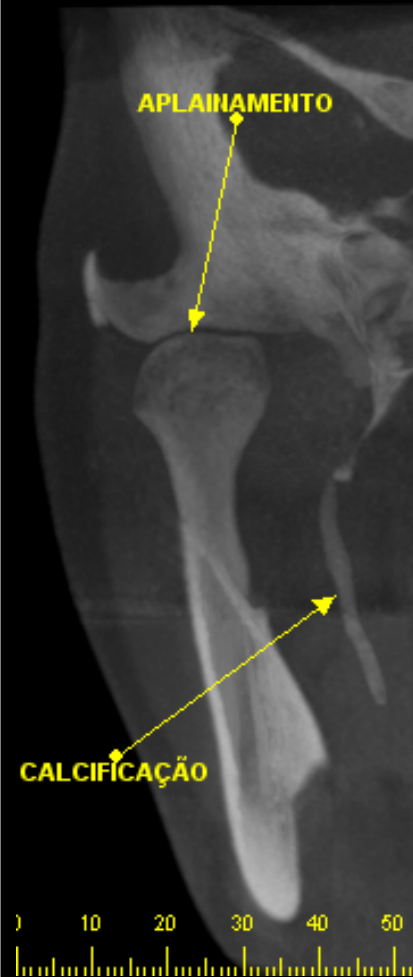
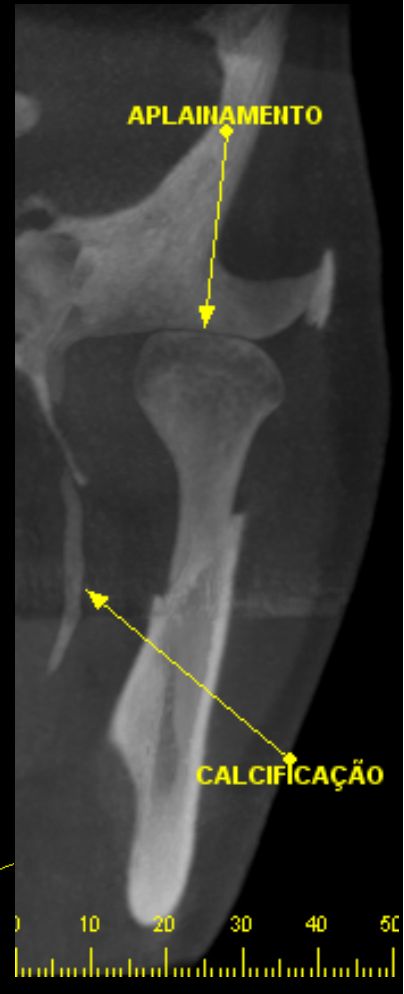


## ATM BOCA ABERTA

### CORTES CORONAIS 1:1



LADO DIREITO



LADO ESQUERDO

### CORTE AXIAL



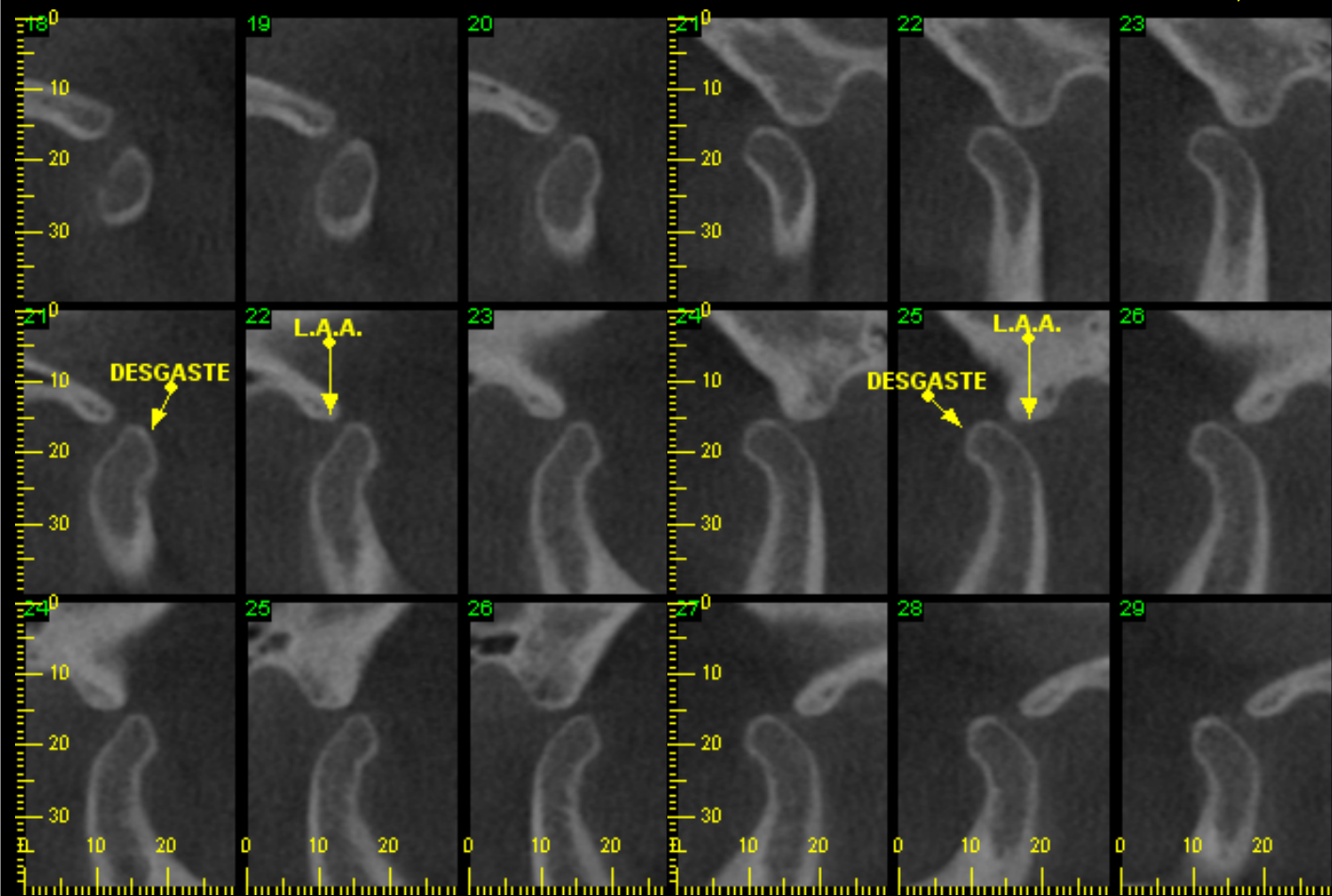
R

L

## ATM BOCA ABERTA

### CORTES SAGITAIS (1:1)

S: 1,0 mm  
T: 1,0 mm



LADO DIREITO

LADO ESQUERDO